



fresh hope
mission &
ministry





INTRODUCTION

CONTENTS

Introduction	1
Research	2
Our Mantra	4
Our Statement of Intent	4
Core Values	5
M&M Functionality	6
Our Team	11
Board Members	13

For several years, Fresh Hope (in NSW and the ACT) has benchmarked ministry practice against the modus operandi of Paul's missionary journey in Acts 20 - *"travelling through the country, passing from one gathering to another, he gave constant encouragement, lifting their spirits and charging them with fresh hope."*

This journey of service has continued to challenge us, as we seek to add value to the local church without undermining or hampering the local leadership of churches. The conference or 'macro' world-view is a privileged view that we hold in tension.

We are diligent and confidential in speaking well of churches, while at times challenging dysfunctional or challenging behaviours in leadership and in pastoral ministry.

It is evident that our culture and society is becoming increasingly adversarial in its position(s) towards the Western Church. Indeed it appears that the powers and principalities of the age are warring against the church's mission, its foundations and its very presence in community. The impacts of the 'season' mean that faith, ministry and evangelical witness are no longer easy pursuits.

This season is not for the faint-hearted. There remains a pivotal call for those who engage on the frontline to keep their hand on the plough in this season of turmoil and change.

RESEARCH

Our friends at Barna.org identified 9 drivers of transformative ministry while researching the state of play for the church in Scotland. These are:

LEADERSHIP

Multiply not only church leaders, but also Christian leaders in every sphere of life.

TEAMWORK

Lead through strategic mutually accountable teams.

ENTREPRENEURIALISM

Embrace risks by releasing entrepreneurial leaders to innovate mission.

BIBLE

Teach the whole Bible for whole life transformation.

COMMUNITY

Create communities of Jesus followers where they know they belong.

OUTREACH

Equip and release every Christian as a missionary disciple.

PRAYER

Pray missionally and make prayer a mission.

MILLENNIALS

Leverage the surprising spiritual openness among younger adults.

PARTNERSHIPS

Collaborate in unity for the sake of the gospel.

From a similar environment in Australia we seek to propagate these drivers via 4 strategic functional areas listed on Page 6



OUR MANTRA

*On Mission & Ministry -
An Agile, Adaptive and Adventurous Team*

OUR STATEMENT OF INTENT

The Fresh Hope Mission & Ministry Team exists to engage in relational environments where ministry and mission leaders, systems and strategies can be courageously aligned contextually with the redemptive purpose of Christ and his Kingdom so that future generations pursue life with God.



OUR CORE VALUES

KINGDOM

We will orientate our mission and ministry by seeking the Kingdom of God and prayerfully pursuing God's agenda.

RELATIONSHIP

We will prioritise relationships before structure and value the integrity of community, trust, fruitfulness and partnership.

MOVEMENT

We will always orientate towards a future of adaptation and change, celebrating new, relevant and innovative ways of presenting the Gospel.

LEADERSHIP

We will develop, mentor, disciple and serve spiritual leaders capable of transforming lives and communities.

TRANSFORMATION

We will use our gifts and experience to help churches leaders engage in culture and society through justice, care, mercy, love and evangelism in healthy, safe and adventurous living.



MISSION & MINISTRY FUNCTIONALITY

Fresh Hope Mission & Ministry will orientate around 4 strategic functional areas:

**1 FRESH HOPE
TRANSFORMATION**

**2 FRESH HOPE
SPIRITUAL LEADERSHIP**

**3 FRESH HOPE
PIONEERING & MISSION**

**4 FRESH HOPE
RESOURCING**

1. Fresh Hope Transformation

We believe that culture and society is best transformed through expressions of the church (faith communities) that offer fresh hope. Our desire and heart is that this movement of churches shifts dramatically from an internal to an external focus capable of being present and engaging in context.

We intend to facilitate cohorts of churches that process their ethos, values and vision and subsequently collaborate to strategically position their church contextually for ongoing transformation and mission.

We intend to be a transformational ‘nonanxious presence’ team that has safe and skilled hands, capable of building bridges in covenantal environments that are rigorous enough to ask the healthy questions, from the simple technical to the more complex issues of ethos and theology.



2. Fresh Hope Spiritual Leadership

We believe that leadership in the Kingdom of God is essentially spiritual. Consequently we seek to create spiritual leadership pathways or pipelines to equip and train leaders across the generations in the practice and art of spiritual leadership.

We intend to identify, raise and release mature spiritual leaders across the generations towards their Kingdom destiny to continue the spiritual battle for the restoration of all humanity and creation.

We intend to catalyse flexible environments that engage cohorts of leaders to sharpen their skills, deepen their theology, engage their relationships, and build their spiritual leadership capacity.

3. Fresh Hope Pioneering & Mission

We believe that it is urgent for Fresh Hope to pioneer new and innovate expressions of church immediately. We also believe that our resources should stimulate mission (as opposed to maintenance) with proactive endeavour to encourage growth.

We intend to “Go”; to begin new, adventurous and transformative expressions of Gospel communities as Kingdom signposts and outposts; being the church in the world, the light in the dark, the salt of the earth that God called her to be.

We intend to develop an environment where care, justice and mercy thrive within mission and ministry in order to have a reputation that is outrageously generous, as well as significantly contributing to the sustainability of a healthy society and our environment.

Working in relationship with Fresh Hope Mission & Ministry and Global Mission Partners to promote and mobilise ambassadors and teams in the Fresh Hope family to resource expressions of care and innovation.



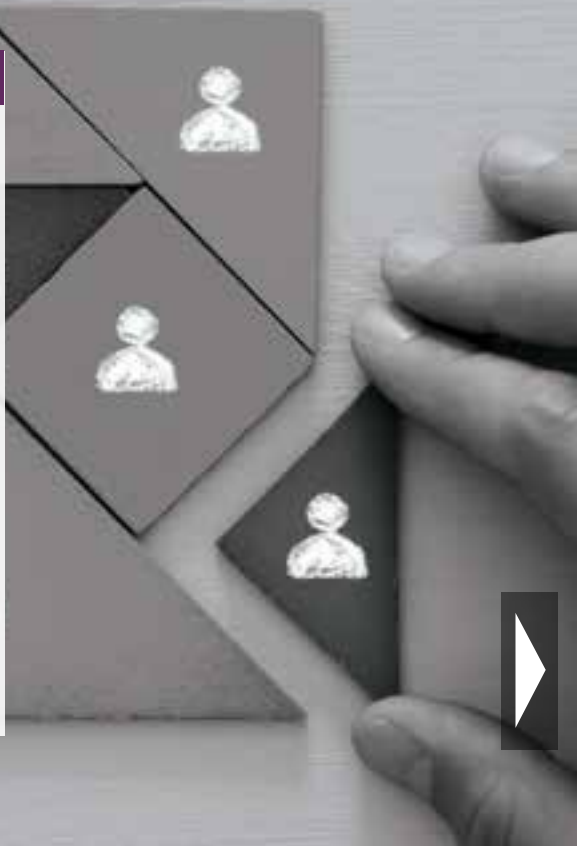


4. Fresh Hope Resourcing

We believe that our Fresh Hope resource centre in Rhodes is suitably able and equipped to add substantial resources to the local church, and intend to offer our services in helpful and cost effective ways.

We intend to provide agile and adaptive support for the administrative and operational components of churches relationally connected to the Fresh Hope Network.

We intend to oversee the connections, communication and resources of Fresh Hope to serve our family of churches.



CONCLUSION

In the decade ahead the Mission & Ministry team will courageously align with the redemptive purpose of Christ and His Kingdom by being highly relational and prioritising spiritual transformation, to lay a foundation for the next generation of leaders to live in unity and create entrepreneurial mission bridges to their generation and beyond.



Introducing Our Team



John Crowther
Director Mission & Ministry



Andrew Ball
Executive Ministry Director



Sue Whiteley
Spiritual Mentoring Facilitator



Richard Reeve
Ministry Leader | FH Engage



Sandra Noel
Ministry Leader | Resourcing



Daz Farrell
Ministry Leader | Pioneering



Laura Payne
Resourcing Administrator



Steve Hodgson
Young Adults Ministry Catalyst



Charlie Burke
Youth Ministry Catalyst



Introducing Our Team



Marianne Crowther
Senior Chaplain



Lee Beamish
Chaplain Coordinator



Taksan Scott
Resourcing Administrator



Ross Stewart
Safe Ministry Practices Leader



Sharayah Lardner
Resourcing Administrator



Jessie Skelly
Mission Catalyst



BOARD MEMBERS

With a unique range of leadership roles in mission & ministry experience and gifting, the M&M Board together seek to discern and develop God's strategy, resourcing and spiritual direction among the Fresh Hope family.



Naomi Gilles (Board Chair)
NationsHeart Canberra



Anne Simpson
NewDay Church Figtree



Brook Stewart
SeeChange Community Jannali



Emily Drough
Mayfield Church of Christ



Gary Sullivan
Wyoming Church of Christ



Victor Tee
Kingsford Church of Christ



fresh hope
mission &
ministry

Level 1, 3 Rider Boulevard
PO Box 3561
Rhodes NSW 2138
T: (02) 8719 2600

E: admin@freshhope.org.au
W: www.freshhope.org.au

